

# Freestanding STOVE JUNO 12 panel white

JUNO/12/B

Price:

€1,080.00

EAN:

5901350016008

JUNO is a perfect solution for the lovers of free-standing stoves assembled in modern frames.

Shipping on pallet

transfer - zł106.00

COD - zł111.00

Implementation within

1 days



## Technical Specifications

Rated output (kW)	12,0
Range of heating power (kW)	6.0 - 16.0
Efficiency (%)	75,0
Exhaust outlet diameter (mm)	160
Complies with Ecodesign criteria	No
Designed for heat recovery unit	No
Fuel type	recommended seasoned hardwood with moisture ≤20%
CO emission (at 13% O <sub>2</sub> ) ≤ given in %	0,10
Flue gas temperature (°C)	320,0
Max log length (cm)	35
Emission of dust (mg/Nm <sup>3</sup> )	34,0
Compliance with BlmSchV 2 standard	Yes
The energy efficiency index EEI	98,88
Glazing type	straight
Opening of the doors	to the left

Material	steel, glass
Width (cm)	89,90
Height (cm)	90,10
Depth (cm)	45,10
External air inlet	Yes
The liner of the combustion chamber	Yes
Ashpan	Yes
Decorative printed glass	Yes
ASDP - automatic control of the air supply	No
Turbine TURBOFAN	No
Water panel	No

## Features

---

JUNO is a perfect solution for the lovers of free-standing stoves assembled in modern frames. Its **simple and elegant** look goes hand in hand with **excellent heating parameters**. The stove is ideal for large as well as smaller spaces. One of many advantages is possibility to regulate supplied air thanks to a built-in air inlet. The elegant look is provided by **decorative glass**. What is more, it has **aclean glass system**, which along with a separate container, helps keep the insert clean.

### MAXIMUM USE OF ENERGY

More efficient combustion and longer maintenance of temperature by lining the combustion chamber with ceramic material TERMOTEC which accumulates heat and raises the temperature in the furnace.

Full combustion on the dust thanks to two deflectors which extend the exhaust path. This process increases the efficiency of burning and guarantees better energy use. It also minimizes the emission of harmful substances to the atmosphere.

Primary air is supplied to the insert thanks to the built-in 125 mm external air inlet. Air inlet is located from the bottom of the insert. Insert has a cover plate on the back wall and a hole in its base. Thanks to it the user can choose how to connect the external air kit. Air adjustment is done with a throttle adjustable by one regulator placed below the door. This solution prevents from improper usage. Whole mechanism works quietly and without fail.

Secondary air adjustment - so called "air curtain" is done with a mechanism installed over the inserts door. The opening of the mechanism allows the air to enter the insert into its upper part, where the combustion of gases produced during wood combustion process takes place. This allows to reduce significantly the emission of harmful CO to the atmosphere. Air directed to the slat "sweeps" the glass pushing away the fire and smoke. It significantly reduces the deposition of soot on the glass so it remains clean.

### SAFETY ON THE HIGHEST LEVEL

Front of the insert is equipped with a heat resistant ceramic withstanding temperatures up to 660°C.

We offered by us glass certified quality and safety.

The body and the front of the insert is resistant to high temperatures through the use of high quality steel.

Excellent tightness thanks to the solid welding made in shielded noble gas. Steel elements are laser cut with the help of modern equipment, and then they are bent on CNC benders.

## COMFORTABLE USE

Keeping the insert clean is easier thanks to fitted ash grate and container where ash is accumulated.

Reduced soot deposition through a system of clean glass system (air curtain). Air curtain separates the glass from the chamber thanks of that the glass doesn't become dirty and emit more heat to the room.

## MODERN DESIGN

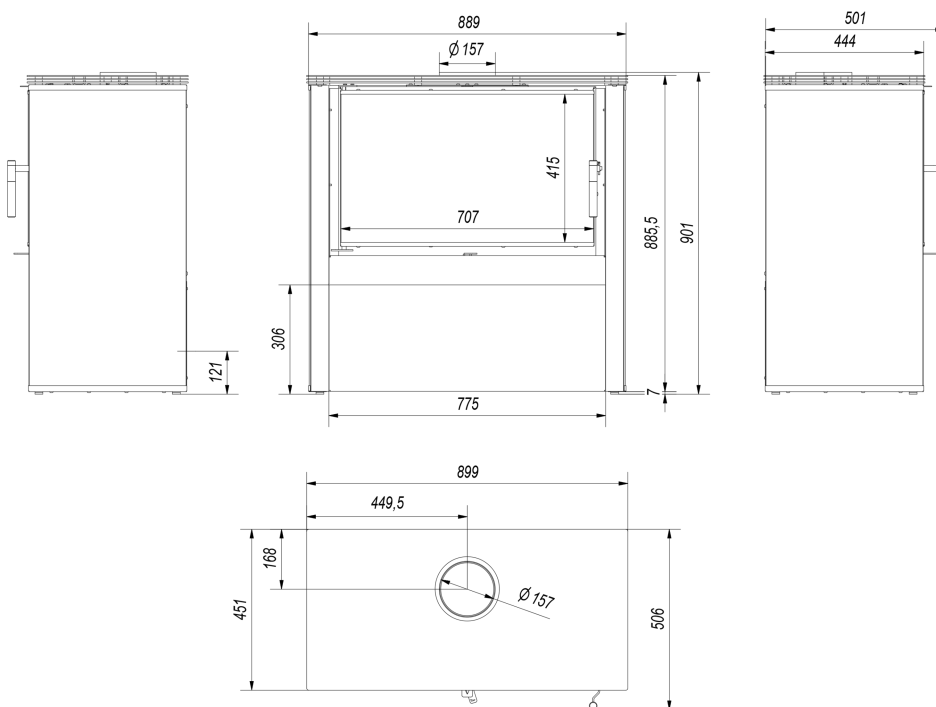
The insert has singular decorative glass thanks to that it looks elegant and modern. Such solution visually enlarges the front of the insert and emphasizes the view of the fire.

The door of the insert has comfortable handle.

5 year warranty.






# Technical drawing

---



## Additional options

---

	<b>Steel pipe 160/1m</b> Exhaust pipe designed for connecting wood-fired fireplace inserts an the existing flue pipes.	€22.49
	<b>Steel pipe 160/0.5m</b> Exhaust pipe designed for connecting wood-fired fireplace inserts an the existing flue pipes.	€14.75
	<b>Movable elbow 160/90</b> Adjustable elbow up to 90°, 3-segment, diameter: 160 mm.	€22.49
	<b>Damper Ø 160 black</b> The damper is designed to regulate the smoke draft.	€22.25
	<b>Steel rosette Ø 160</b> Rosette Ø 160, made of black sheet - a masking element.	€4.36

## Warranty

---

All the products available at [www.kratki.com](http://www.kratki.com) are brand new, free from any physical or legal defects. The Producer grants a 5-year warranty from the moment of purchase of a stove for its reliable operation. The ceramic liner is covered with a 2-year warranty from the moment of the purchase of the stove. Grate and sealing for the stove are covered with a 1-year warranty from the moment of the purchase of the stove. The warranty shall not cover heat-resistant ceramics. The application of the stove, the method of joining with the chimney as well as the terms and conditions of use must correspond with the manual.

## Return

---

A Customer being a Consumer, who has concluded the Sales Contract may rescind thereof within a period of 14 days without giving any reasons. The time limits run for the rescission of the Sales Contract shall commence at the time of acquiring the Goods by the Customer or a third party of

their choice, other, however, than a carrier. The representations may be submitted in a form whose template has been published by the Seller at the Online Shop Website.



**Kratki.pl Marek Bal**  
ul. W. Gombrowicza 4  
26-660 Wsola/Jedlińsk

**www.kratki.com**  
(+48) 48 389 99 11  
contact@kratki.com

Date of publication:  
29.10.2020